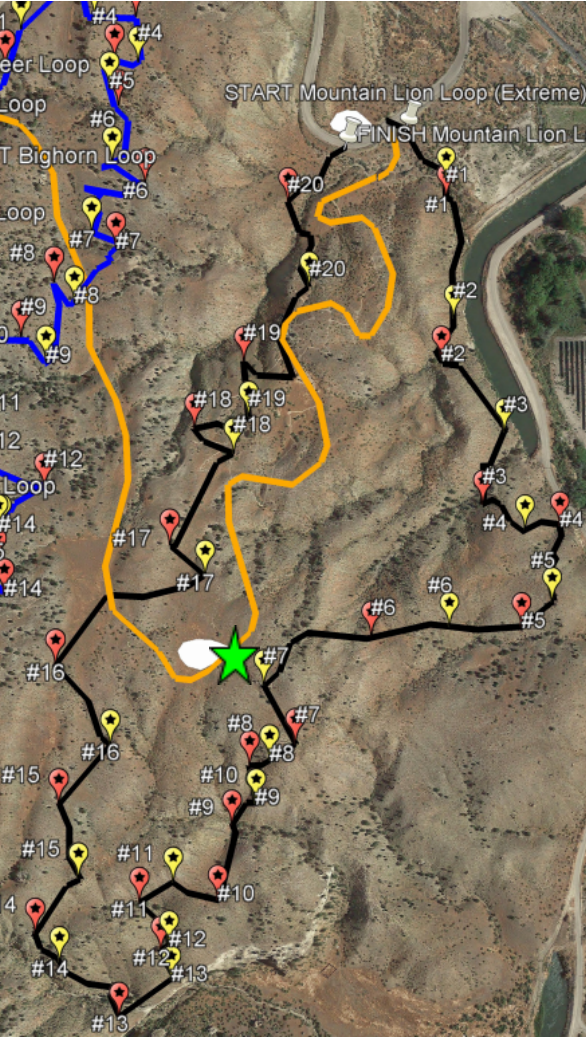
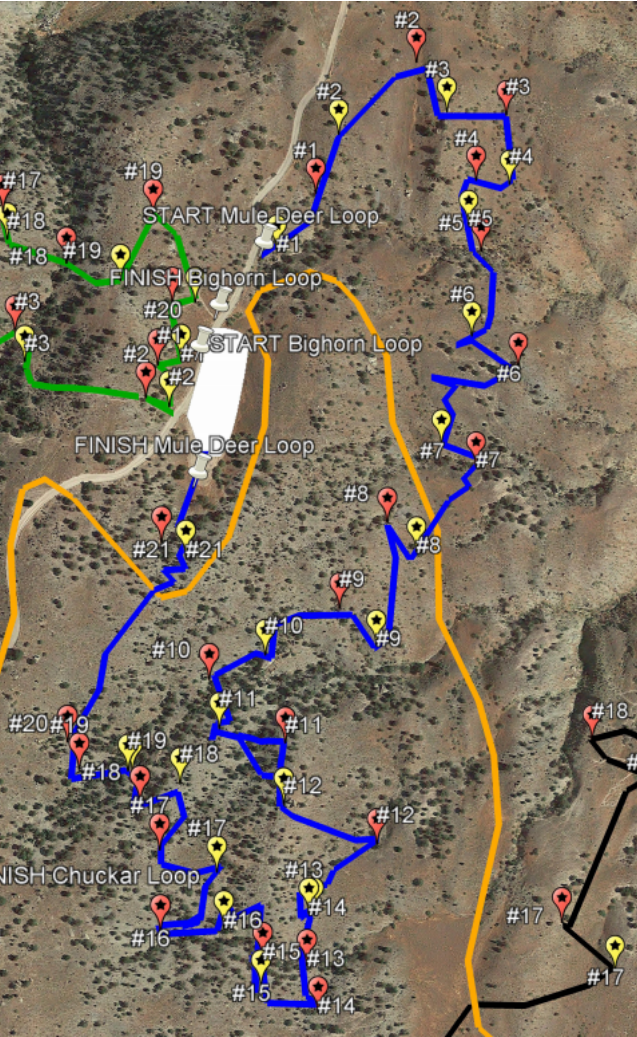


MOUNTAIN LION (EXTREME) 2 Mile



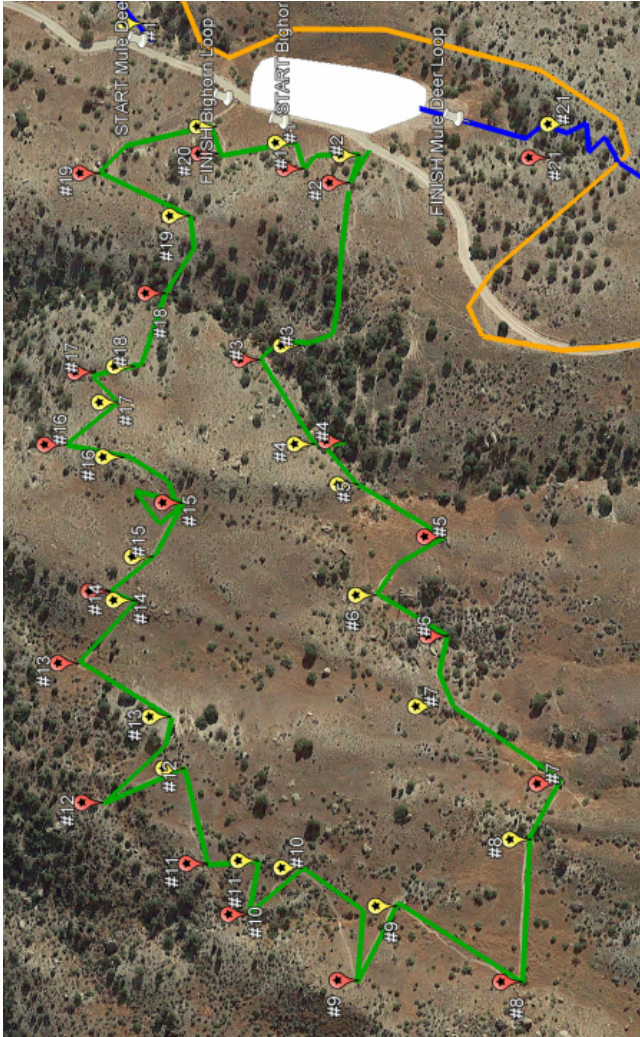
1.	20	11.	46	Extreme "short version" park at shoot #7-#16 ★
2.	48	12.	11	
3.	85	13.	67	
4.	42	14.	44	
5.	44	15.	83	
6.	84	16.	101	
7.	70	17.	49	
8.	21	18.	51	
9.	34	19.	64	
10.	113	20.	102	

MULE DEER (INTERMEDIATE) 1 Mile +



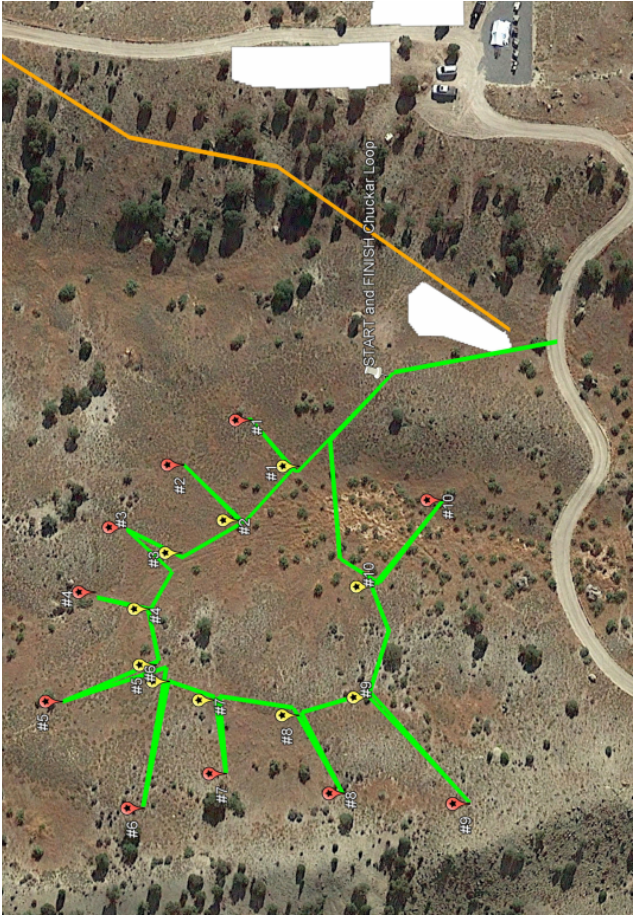
1.	44	11.	46
2.	74	12.	64
3.	47	13.	34
4.	30	14.	63
5.	20	15.	25
6.	40	16.	41
7.	31	17.	39
8.	29	18.	28
9.	36	19.	33
10.	40	20.	48
		21.	21

BIGHORN (MODERATE) 1 Mile



1.	16	11.	25
2.	20	12.	42
3.	23	13.	49
4.	17	14.	23
5.	46	15.	28
6.	38	16.	29
7.	61	17.	20
8.	67	18.	37
9.	40	19.	48
10.	34	20.	20

CHUKAR (FAMILY/TRADITIONAL)



1.	20	*Yardages were ranged with an angle modified range finder.
2.	23	
3.	18	
4.	16	
5.	27	
6.	34	
7.	21	
8.	25	
9.	39	
10.	31	

SHOOTING POSITIONS
RED=Youth
BLUE=Women
RED or BLUE=Traditional
WHITE/NUMBERS=Male

3D ARCHERY RULES

- All shooters must check-in and check-out at the range office.
- Maximum 2 arrows per target per shooter.
- Target and field points **ONLY (no broadheads)**.
- NO Head Shots
- NO Crossbows.
- NO SMOKING, ALCOHOL, or ILLEGAL DRUG USE
- NO DOGS/PETS allowed on CSEC Property except by CSEC special use permit.
- ONLY shoot from designated shooting positions.
- Walking up on the trail towards the target is allowed if the target is too far for the shooter.
- Shoot 3D targets in order and stay on designated trails.
- Stand to the side of the target when pulling arrows and ensure no one is behind you.
- If retrieving an arrow beyond the target, leave a bow in front of the target or someone standing by the target.
- DO NOT Draw a bow back without an arrow.
- DO NOT DRY FIRE (Releasing the string without a nocked arrow).
- No sky drawing (Keep arm parallel to ground when drawing bow).
- Always keep a loaded bow pointed at your target and know what is beyond your target.
- It is illegal to kill, injure or fire upon wildlife (all applicable wildlife laws will be enforced).



ARCHERY BAY



GENERAL RULES

- DO NOT Draw a bow back without an arrow.
- DO NOT DRY FIRE (Releasing the string without a nocked arrow).
- No sky drawing (Keep arm parallel to ground when drawing bow).
- Target and field points **ONLY (no broadheads)**.
- No Crossbows.
- No running at the archery bay.
- NO SMOKING on the firing line.
- NO PETS
- Do not use tape/ draw on targets (Use pins and paper)
- It is illegal to kill, injure or fire upon wildlife
- (all applicable state wildlife laws will be enforced)

SAFETY RULES

- Always keep a loaded bow pointed down range and know what is beyond your target.
- No one is allowed forward of the red safety line when the line is “HOT”.
- Shoot from the red line ONLY. No walking up or backing up into the parking lot to gain yardage.
- Never load an arrow or take an arrow out of your quiver until the line is “HOT”.
- Range must be declared safe before ANYONE goes forward of the red safety line.
- All bows must remain on racks and the line declared safe before anyone goes down-range.
- Stand to the side of the target when pulling arrows and ensure no one is behind you.
- Anyone can call an emergency “CEASE FIRE” for safety emergencies.

CEASE FIRE PROCEDURES

- Immediately put all arrows in quivers and bows on racks/hangers.
- No one is allowed downrange until range is declared safe and clear (“COLD”)
- No handling bows or arrows during a cease fire

Exit 45 off I-70
PHONE#: (970)-464-1339
Website: CameoSEC.org
Includes our **CALENDAR OF EVENTS**

Regular Business Hours

Open 7 days a week

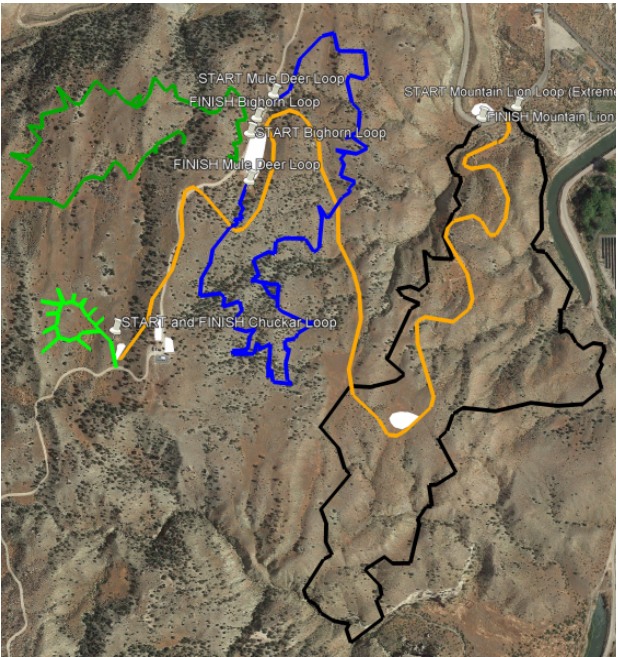
Summer Hours

7am to 7pm, March 15th to October 14th
(Sporting Clays 7am-6:30pm)

Winter Hours

8am to 4pm, October 15th to March 14th
(Sporting Clays 8am-3:30pm)

***All ranges are subject to closure due to permitted events or maintenance**



ARCHERY

CAMEO SHOOTING AND EDUCATION COMPLEX



“A World-Class Shooting Experience In The Heart of Western Colorado!”